

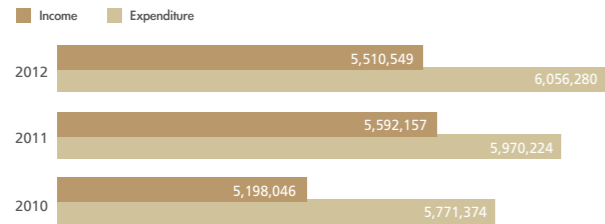
### ❖ Alumni

\*Unit: number of degree granted

	2010	2011	2012
Bachelor	1,271	1,314	1,443
Master	1,459	1,466	1,504
Doctoral	313	295	311
Total	3,043	3,075	3,258

### ❖ Financial Statement

\*Unit: NTD (in thousands)



## NTHU | RESEARCH RESULT

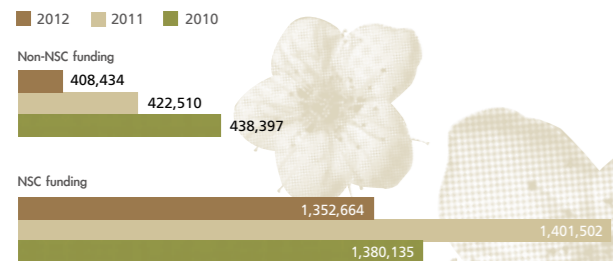
### ❖ Research Result

\* Unit: number of articles

Category	2010	2011	2012
SCI	1,434	1,688	1,661
SSCI	67	67	84
A&HCI	15	12	12
Selected / Book chapter	51	77	65
Human and social fields (non-SSCI) / Non-Chinese Journals	45	31	34
HICi	84	105	131

### ❖ Research Project Budget

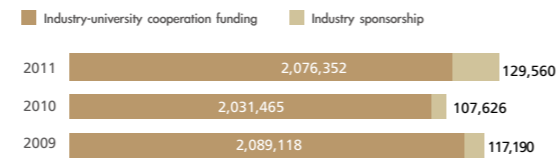
\*Unit: NTD (in thousands)



\*Based on January 2013 figure

### ❖ Industry-University Project Budget

\*Unit: NTD (in thousands)



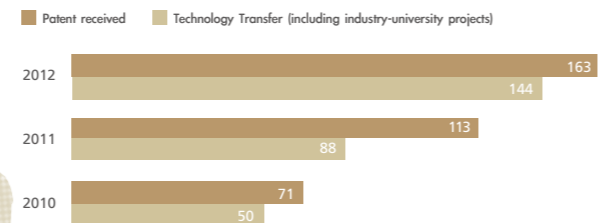
### ❖ Technology Transfer Budget

\*Unit: NTD (in thousands)



### ❖ Patents and Technology Transfer

\*Unit: items



\* NTHU received the Technology Transfer Center Award from NSC for five consecutive years (2007 – 2011).

\* NTHU received the first Taiwan Innovation Award, Thomson Reuters, Taiwan in 2012.

\* NTHU received the "Best Incubation Center Award" presented by the Ministry of Economic Affairs in 2012.

\*Based on March 2013 figure



### NATIONAL TSING HUA UNIVERSITY

101 Section 2 Kuang-Fu Road,  
Hsinchu, Taiwan 30013, R.O.C.

TEL : +886-3-5715131

E-mail : web@cc.nthu.edu.tw

http://www.nthu.edu.tw

http://www.facebook.com/nthu.tw

# 清華

NATIONAL  
TSING HUA  
UNIVERSITY



# NATIONAL TSING HUA UNIVERSITY

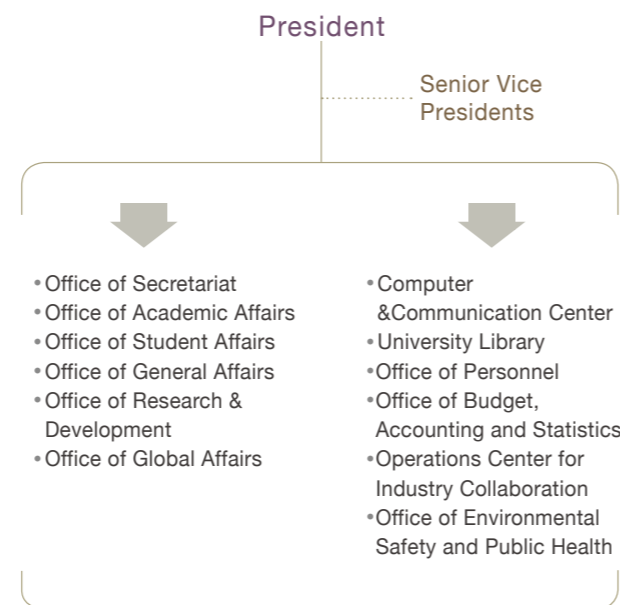
## NTHU | A BRIEF HISTORY

National Tsing Hua University has a long and proud history. First established as the Tsing Hua Academy at Tsing Hua Garden in Beijing in 1911, the Academy was renamed as National Tsing Hua University in 1928 when its curricula were expanded to that of a full-fledged university. In 1956, National Tsing Hua University (NTHU) was reinstalled on its current campus in Hsinchu, Taiwan. Since its reinstallation, NTHU has developed from an institute focusing on Nuclear Science and Technology to that of a comprehensive research university offering degree programs ranging from baccalaureate to doctorate in science, technology, engineering, humanities and social sciences, as well as management. NTHU has been consistently ranked as one of the premier universities in Taiwan and is widely recognized as the best incubator for future leaders in industries as well as academics. Such stellar records are particular exemplified by the outstanding achievements of our alumni, including two Nobel laureates in physics Drs. Cheng-Ning Yang and Tsung-Dao Lee, one Nobel Laureate in chemistry Dr. Yuan-Tseh Lee and one Wolf Prize winner in mathematics Dr. Shiing-Shen Chern.



## NTHU | UNIVERSITY ADMINISTRATION

### University Administration



### Personnel

Academic			Staff	
Title	Total		Total	
Full-Time (641)	Professor	330	Regular	214
	Associate Professor	164	Campus Police	27
	Assistant Professor	130	Term Appointment	446
	Instructor	9	Research Staff (Funded by projects)	381
	Military Instructor	8		
	Research Fellow	246		
Faculty on Term Appointment	20			
Adjunct Professor	284			

\*Based on March 2013 figure

### Faculties and Programs

COLLEGE OF SCIENCE	DEGREE PROGRAM(S) OFFERED	COLLEGE OF LIFE SCIENCE	DEGREE PROGRAM(S) OFFERED
Department of Mathematics	B, M, D	Department of Life Science	B
Department of Physics	B, M, D	Department of Medical Science	B
Department of Chemistry	B, M, D	Interdisciplinary Program of Life Sciences	B
Interdisciplinary Program of Science	B	Institute of Molecular and Cellular Biology	M, D
Institute of Statistics	M, D	Institute of Molecular Medicine	M, D
Institute of Astronomy	M, D	Institute of Bioinformatics and Structural Biology	M, D
Program of Science and Technology of Synchrotron Light	M, D	Institute of Biotechnology	M, D
Biochemistry Program	D	Institute of Systems Neuroscience	M
COLLEGE OF ENGINEERING	DEGREE PROGRAM(S) OFFERED	COLLEGE OF ELECTRICAL ENGINEERING AND COMPUTER SCIENCE	DEGREE PROGRAM(S) OFFERED
Department of Chemical Engineering	B, M, D	Department of Electrical Engineering	B, M, D
Department of Materials Science and Engineering	B, M, D	Interdisciplinary Program of Electrical Engineering and Computer Science	B
Department of Power Mechanical Engineering	B, M, D	Department of Computer Science	B, M, D
Department of Industrial Engineering and Engineering Management	B, M, D	Interdisciplinary Program of Electrical Engineering and Computer Science	B
Interdisciplinary Program of Engineering	B	Institute of Communications Engineering	M, D
Institute of NanoEngineering and MicroSystems	M, D	Institute of Electronics Engineering	M, D
Industrial Engineering and Engineering Management Master Program	M	Institute of Information Systems and Applications	M, D
Institute of Biomedical Engineering	M	Institute of Photonics Technologies	M, D
Program of Advanced Energy	D	Communications Engineering and Biology Information Program	D
COLLEGE OF NUCLEAR SCIENCE	DEGREE PROGRAM(S) OFFERED	COLLEGE OF TECHNOLOGY MANAGEMENT	DEGREE PROGRAM(S) OFFERED
Department of Engineering and System Science	B, M, D	Department of Quantitative Finance	B, M
Department of Biomedical Engineering and Environmental Sciences	B, M, D	Department of Economics	B, M, D
Interdisciplinary Program of Nuclear Science	B	Double Specialty Program of Management and Technology	B
Institute of Nuclear Engineering and Science	M, D	Institute of Technology Management	M, D
Program of Science and Technology of Synchrotron Light	M, D	MBA	M
COLLEGE OF HUMANITIES AND SOCIAL SCIENCES	DEGREE PROGRAM(S) OFFERED	Institute of Law for Science and Technology	M
Department of Chinese Literature	B, M, D	EMBA	M
Department of Foreign Languages and Literature	B, M	IMBA	M
Interdisciplinary Program of Humanities and Social Sciences	B	Institute of Service Science	M
Institute of History	M, D	COMMISSION OF GENERAL EDUCATION	DEGREE PROGRAM(S) OFFERED
Institute of Linguistics	M, D	Institute of Learning Sciences	M
Institute of Anthropology	M, D		
Institute of Sociology	M, D		
Institute of Philosophy	M		
Institute of Taiwan Literature	M, D		
Taiwan Studies MA Programs	M		

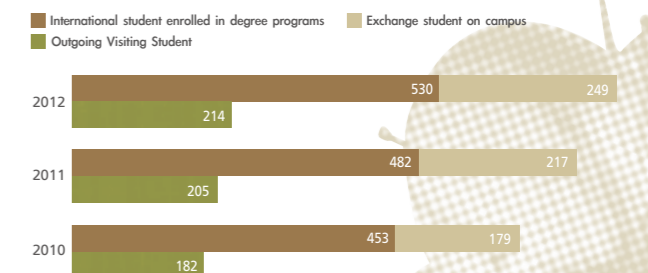
\*B: Baccalaureate; M: Master; D: Doctorate

### Student Profile

Academic Unit	Undergraduate	Graduate Studies	Doctoral	Total
College of Science	941	437	353	1,731
College of Engineering	1,513	986	562	3,061
College of Electrical Engineering and Computer Science	1,130	1,187	419	2,736
College of Life Sciences	389	224	264	877
College of Nuclear Science	680	306	221	1,207
College of Humanities and Social Sciences	754	435	159	1,348
College of Technology Management	881	490	50	1,421
Commission of General Education	0	30	0	30
<b>Total</b>	<b>6,288</b>	<b>4,095</b>	<b>2,028</b>	<b>11,411</b>

\*Based on February 2013 figure

### International Students



\*Based on March 2012 figure

### Sister Universities

Area	Asia	America	Europe	Africa	Oceania	Total
Total	88	27	34	2	4	155

\*Based on February 2013 figure