

Study and research in Germany



Presentation topics We will talk about...



- Introducing Germany and its importance in the European Union
- Features of the German higher education system
- International degrees
- Research opportunities
- Your way to Germany
- Service and counselling



Germany – A fascinating country



- Largest member of the EU with a population of more than 82 million people – nearly 10 % are foreigners
- Located right in the heart of Europe
- Cities: Berlin – capital with 4 million inhabitants, Hamburg, Munich, Cologne, Heidelberg...
- Various landscapes and pleasant climate: Up to 100 sunny days
- Cultural diversity: museums, theatres, opera houses...

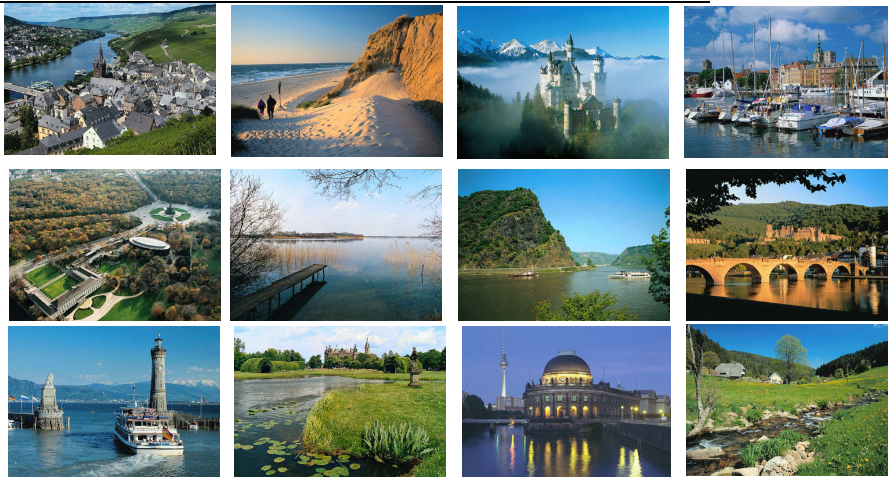


Study and research in Germany

www.campus-germany.de

page 3

Germany – A fascinating country



Study and research in Germany

www.campus-germany.de

page 4

Quality „Made in Germany“

You have surely benefited from Germany`s innovative strength... perhaps without even knowing it

- The MP3 format – a German innovation
- Mercedes-Benz, BMW & Volkswagen
- Sportswear from Puma and Adidas
- Pharmaceuticals from Bayer are "Made in Germany"
- And much more.....



Germany – Your gateway to Europe

Germany lies in the heart of Europe and has nine direct neighbours.

Denmark, Netherlands, Belgium, Luxembourg, France, Switzerland, Austria, Czech Republic and Poland

27 countries – including Germany – form a Common Market:
The European Union



Wide variety of study opportunities



- Universities
- Technical Universities
- Universities of Applied Sciences
- Colleges of Art and Music
- Private universities and colleges
- Universities of Co-operative Education



Study and research in Germany

www.campus-germany.de

page 7

Features of the German higher education system



A large variety of institutions and programmes at a high academic level

- Universities: theoretical and scientific-oriented programmes
- Universities of Applied Sciences: shorter and practice-oriented programmes

Academic freedom and quality: The Humboldt model of studies and research helps to educate well-qualified and responsible students!



Study and research in Germany

www.campus-germany.de

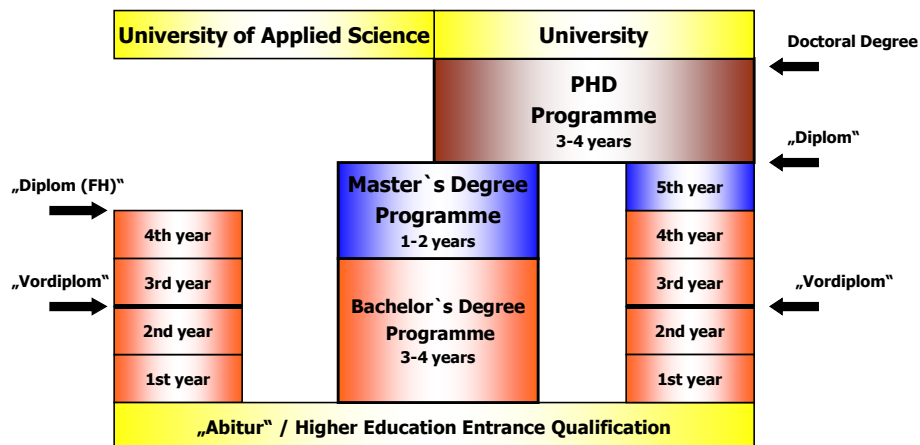
page 8

Structure of the German higher education system



- Traditionally, the first degree offered at German universities is a *Magister* or *Diplom*, which begins after high school and takes 4-5 years to complete, depending on the type of institution.
- After graduation qualified students may decide to complete their doctoral degree which usually lasts 3 to 4 years. Such a degree requires the preparation of a research project and a scientific thesis.
- Recently introduced International Degree Programmes (IDPs) offer a more flexible approach to study – especially for international students. International degrees such as Bachelor's and Master's degrees exist along with the traditional structure.

Basic structure of German higher education system



International Degree Programmes in Germany



In addition to the traditional degree courses, Bachelor's and Master's degree courses have been established by the German universities, many of them with support of federal and state governments:

- Currently 9,500 Bachelor's and Master's courses (73%) are being offered and the number is increasing steadily...
- The majority of courses begin in winter semester and are in the fields of engineering, natural sciences, computer science and economics.
- They are especially devised to meet the needs of international students.



Advantages of International Degree Programmes



- Tightly organised programmes: modular course structure
- Intensive guidance and counselling: tutoring and mentoring programmes offered by academic staff
- Many of the IDPs are bilingual or held completely in English
- Examinations and theses can often be written in English even in courses lectured German
- German courses included – summer courses available
- Different nationalities create an intercultural atmosphere
- Internationally recognised degrees – also in your native country

A launching pad for an international career



Research in Germany

- Unity of teaching and research
- Co-operation with industry in appropriate disciplines
- R&D expenditure in Germany is among the highest of the world (2,5% of GDP)
- Research Training Groups (Graduiertenkollegs) and Collaborative Research Centres (SFB) funded by Deutsche Forschungsgemeinschaft (DFG)
- Germany has a network of non-university research facilities

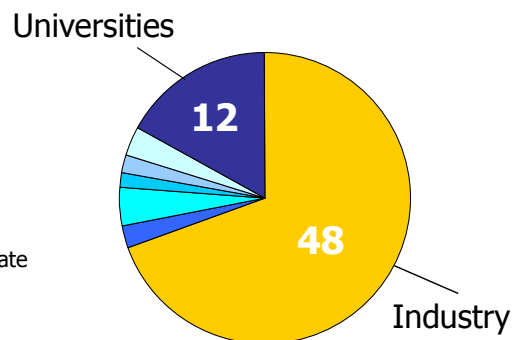


Chipcard press-machine

Research Investment in Germany

→ Total research budget: 70 billion US \$

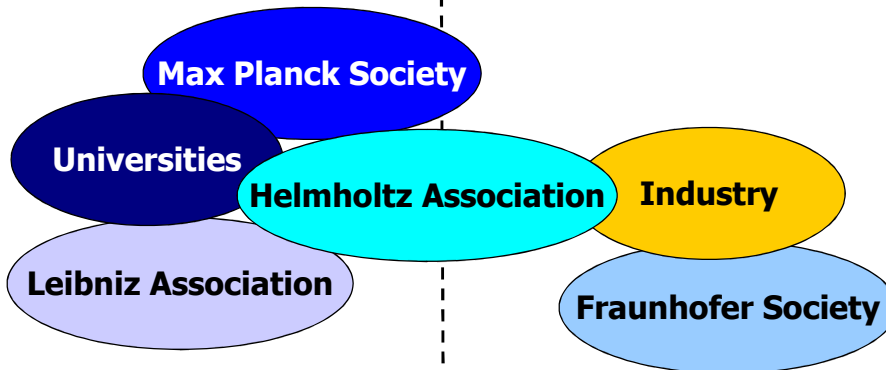
- Max-Planck-Society
- Helmholtz Association
- Fraunhofer Society
- Leibniz Science Association
- other governmental or private research institutes



Key Players in Research

Fundamental Research

Applied Sciences



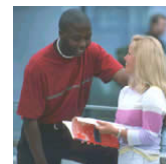
Options for graduate studies in Germany

Traditional guidance model

individual mentoring by thesis supervisor

Newly established graduate schools offer excellent prospects for international doctorates

- Graduiertenkollegs
- International Max Planck Research Schools
- Graduate Schools of the Federal States of Germany
- IPP – International Postgraduate Programmes



Options for graduate studies in Germany



Graduiertenkollegs – Research Training Groups

- Subject-oriented and temporary institutions in the fields of humanities, natural sciences and engineering
- 281 Graduiertenkollegs - among them 29 international ones - are funded by the DFG
- Internet: www.dfg.de

International Max Planck Research Schools

- Interdisciplinary and multilingual institutions
- 29 centres of scientific excellency in the fields of computer science, natural sciences etc.
- Most of the doctorates are international
- Internet: www.mpg.de

Options for graduate studies in Germany



Graduate Schools of the Federal States of Germany

- Offer Ph.D. programmes in various disciplines, often in English language
- 27 Graduate Schools in NRW, Lower Saxony, Bremen and Bavaria
- Internet: www.bildungsportal.nrw.de / www.mwk.niedersachsen.de / www.elitenetzwerk-bayern.de

IPP – International Postgraduate Programmes

- Is a network of 47 interdisciplinary postgraduate programmes lectured in English
- Selected by the DFG and the DAAD
- Internet: www.daad.de/ipp

Germany – A wise choice for study and research



A high standard of living and excellent conditions for your study at a moderate level of costs

- Average cost of living: 650 € per month for a single person
- No (or low) tuition fees for undergraduate students
- Only some postgraduate courses charge tuition fees, but they are less expensive than in most other comparable countries
- Outstanding Ph.D. students are often sponsored by universities or other funding institutions
- Social fee (approx. 110 €) which must be paid by every student includes e.g. free use of local public transport system

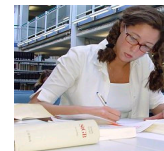


Germany – A wise choice for study and research



Students have a good and comfortable life on and off-campus

- Well-equipped road and rail network enables pleasant travelling
- The intercultural atmosphere creates an inspiring climate for study and research – 12% are international students
- The Deutsche Studentenwerk - an institution for all student's social needs
 - organises cultural events as well as sports and leisure activities
 - runs cafeterias, lunch canteens and dormitories
 - offers meals at low prices
 - and provides counselling for international students



German – No language barrier

- Lots of IDPs use English as the academic language – in order to manage daily life and to find German friends you have to acquire a basic knowledge of German
- German has common roots with English
- For students there are many opportunities to learn German:
 - Universities provide summer courses as well as courses alongside with the study www.summerschools-in-germany.de
 - E-learning: www.dw-world.de / www.deutsch-uni.com
 - German courses: www.goethe.de / www.did.de / ww.cdc.de
 - Standardised German language test: www.testdaf.de

The way to Germany

Visa

- A student visa is necessary for non EU-citizens. For the application several documents e.g. passport, university's admission letter, proof of sufficient financial resources, health insurance certificate are required.
- For more information contact the German Institute in Taiwan



Financial resources

- 7.800 € per year
- Studying is a full-time occupation, but students may find a part-time job on or off-campus in order to gain practical experience and to improve their financial situation:
Up to 20 hours per week or 180 half days per year are allowed



Admission and prerequisites

For undergraduate courses:

- higher education entrance qualification – if not equivalent to the German „Abitur“ a 12-months bridging course is necessary

For postgraduate courses:

- Bachelor's degree in the relevant discipline

Language requirements:

- English or/and German according to the course language
→ Specific requirements depending on the respective course

High qualifications, scientific spirit, curiosity and thirst for knowledge and new experiences

Legal conditions for international students and scientists - The new Immigration Act

- Foreign Academics will be allowed to stay for at least 1 year in Germany to work or look for work
- Highly qualified people can be granted a settlement permit immediately

Planning time line

In advance	To Do
1 year	Collect information about course content, requirements, application procedure etc.
9 months	Download application papers from internet or contact the university
6 months	Send complete application to the university in consideration of the application deadline
4 months	Visa application, accommodation
Arrival in Germany	Enrolment, health insurance, registration
3rd month	Extension of visa

Information website: www.daad.de

- Universities guide
- Grants & scholarships
- Living in Germany
- News, Alumni
- FAQs, WWW-Links

The screenshot shows the DAAD website interface. At the top, there are navigation links for 'Deutsch', 'Englisch', 'Español', and 'Other languages'. The main content area features a large article titled 'Fünf gute Gründe für ein Studium in Deutschland' (Five good reasons for a study in Germany) with a sub-headline 'Sie stehen vor der Frage, wo Sie Ihre akademische Ausbildung absolvieren sollen?' (You stand before the question, where you should complete your academic education?). To the right, there is a section for 'DAAD NEWS' with a sub-headline 'Deutsch lernt Sommersemester 2007'. At the bottom, there are several smaller articles and a search bar labeled 'DAAD suche'.

Facts about the DAAD – German Academic Exchange Service



An organisation responsible for the implementation of foreign cultural policy, German higher education policy and the development of co-operation measures

- Members: 230 higher education institutions & 126 student bodies
- Head office in Bonn
- 14 branch offices and office in Berlin
- 48 information centres in 39 countries
- 460 lecture positions in 88 countries
- Over 55.000 scholarship holders in more than 200 programmes



DAAD-Scholarships in Taiwan



Research and Doctoral scholarships

- up to six months (research)
- one to four years (doctorate)
 - German supervisor is essential!

Summerschool scholarships

Want to know more?

Services and counselling

- DAAD Information Center Taipei
Wednesday, Thursday 2-5.30 pm
www.daad.org.tw

Visa formalities

- German Institute in Taiwan
www.taipei.diplo.de



ERASMUS MUNDUS

<http://www.deltwn.ec.europa.eu/>

Welcome to Germany



"德國的碩士學位
得來不易，而這更
顯示出其價值非凡。"

全職在德國取得碩士學位以後，
目前在德國漢堡-哈爾堡工業大學
繼續攻讀工程力學博士學位。

A country where you
can strive for scientific
goals and enjoy a
great student life!