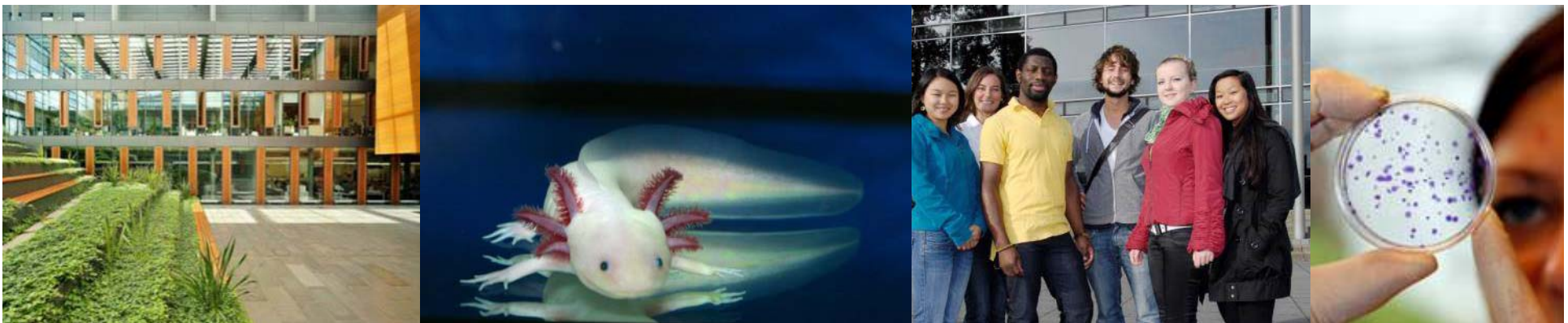
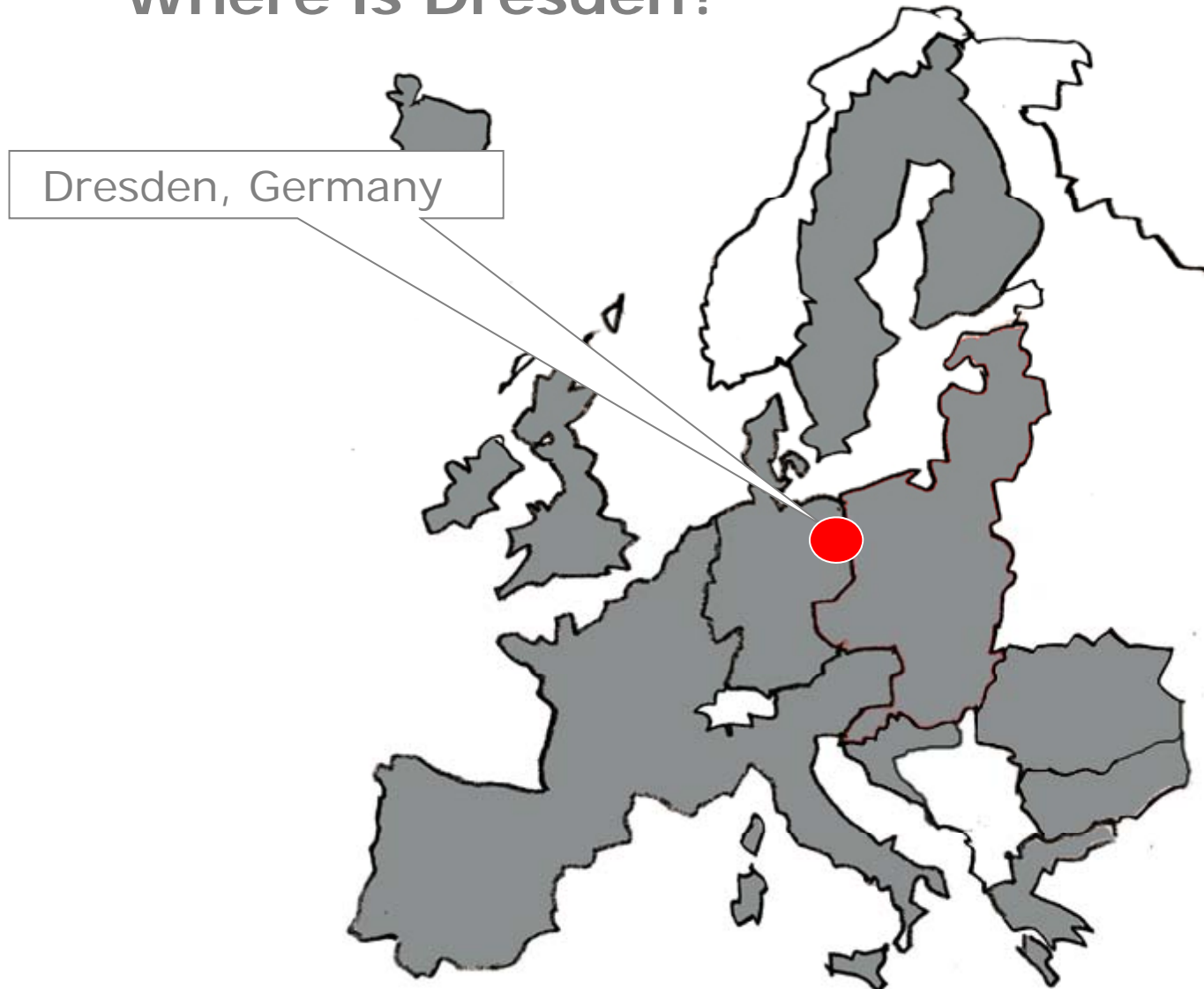




Studying at TU Dresden: an excellent choice



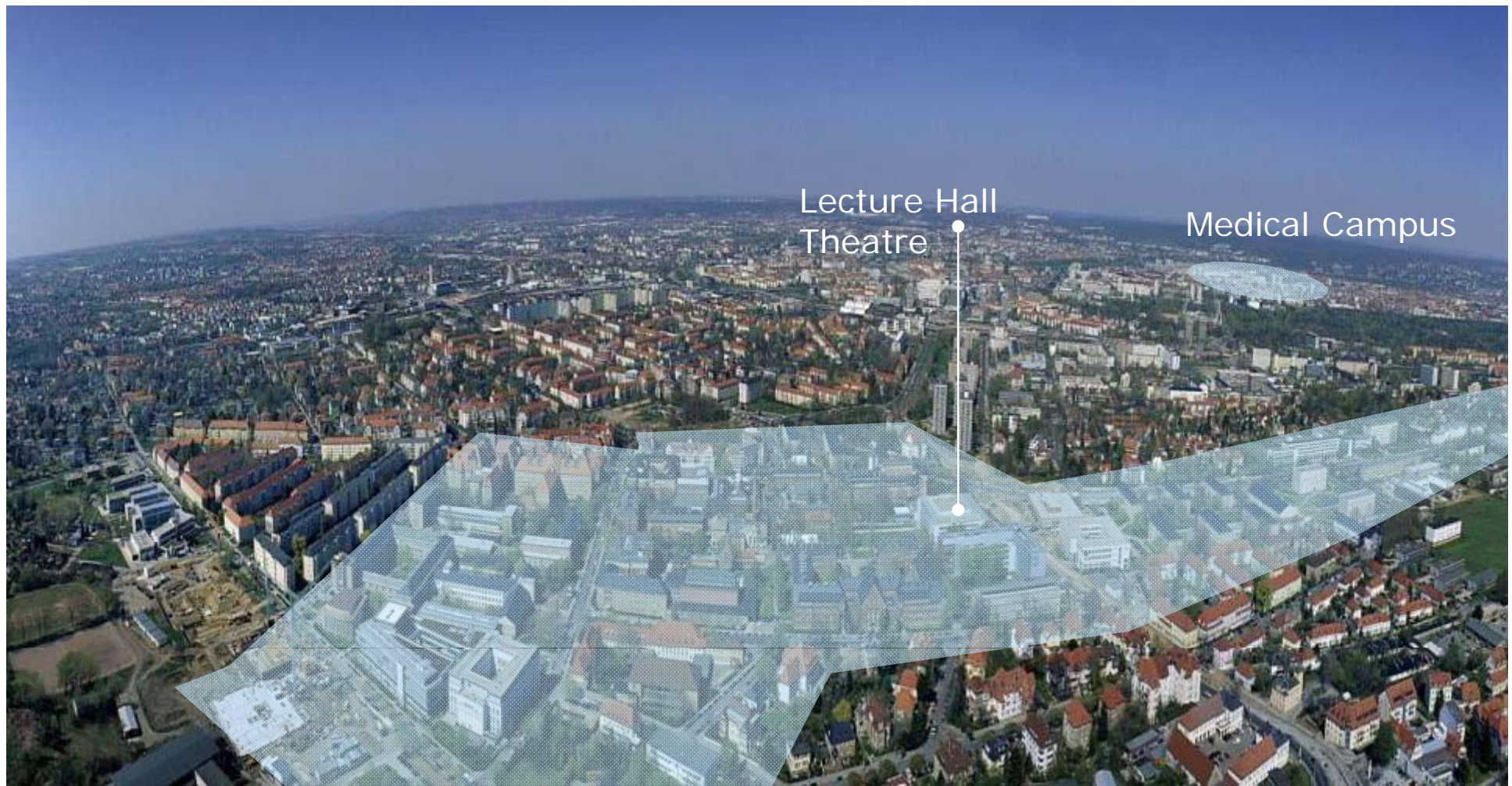
Where is Dresden?



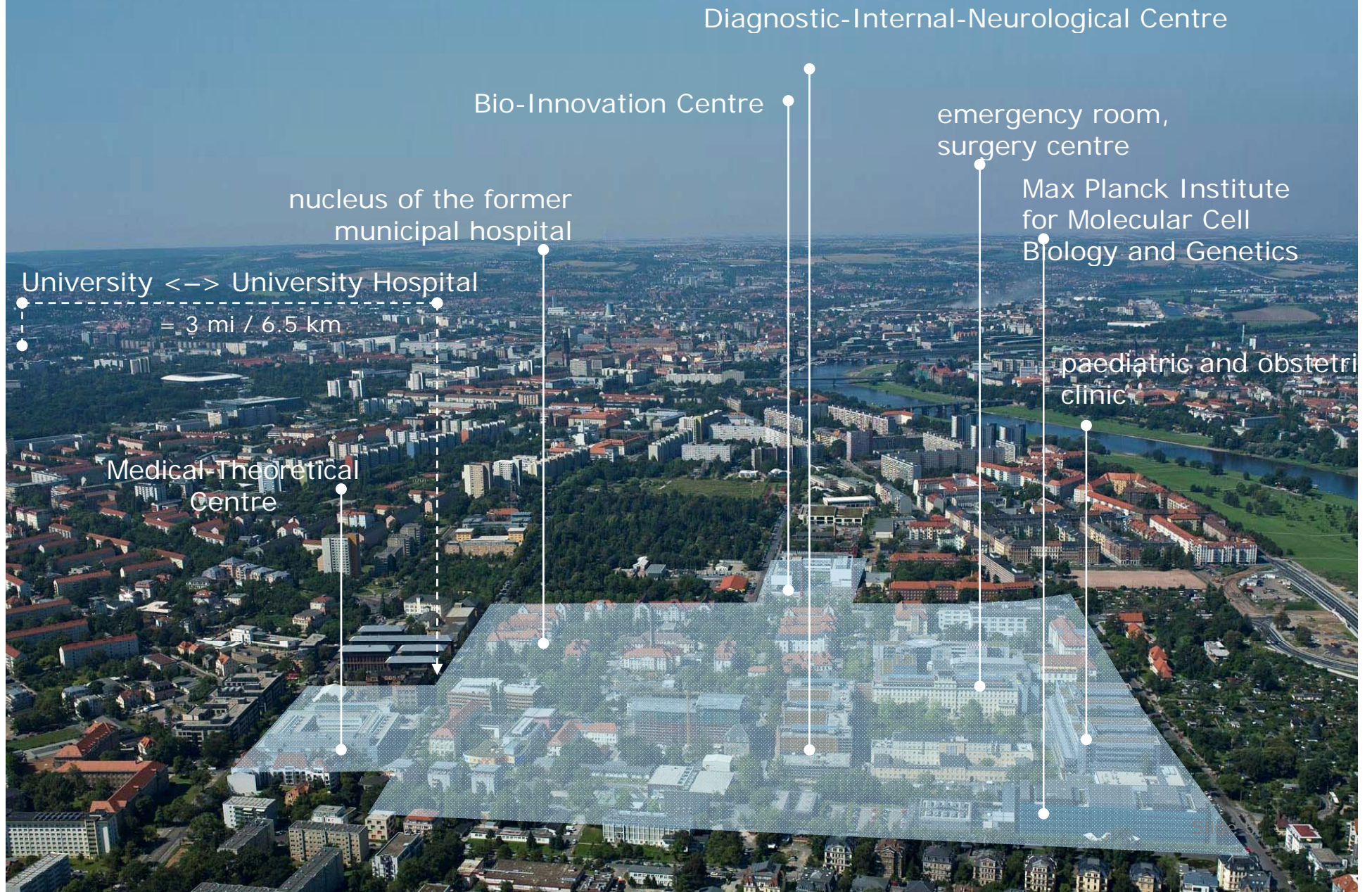
What do I need to know about TUD?

- One of 11 universities of excellence in Germany
- Founded in 1828
- Students: 36.737 (2014/2015)
Freshmen: 9.055 (2014/2015)
- International Students: 4640 (~13%)
- Programmes: ~120 (Bachelor, Diplom, Staatsexamen, Master)
- Various exchange programmes

The Main Campus



The Medical Campus



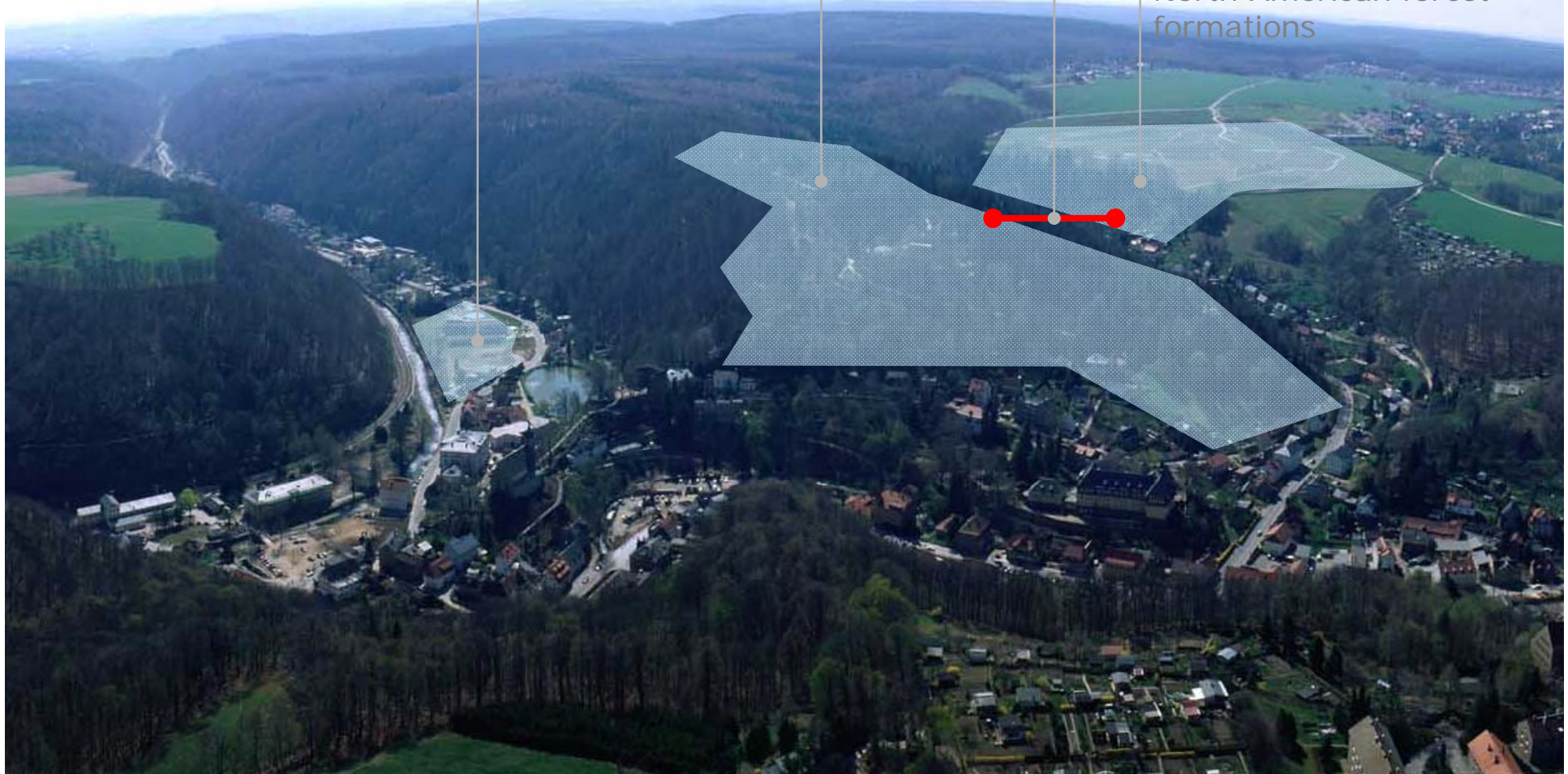
Tharandt: University & Arboretum/Botanical Garden

teaching facilities,
library, cafeteria

original forest dating before
1831; greenhouses, tree
nursery, museum

bridge: award-winning
student project

North American forest
formations



Monument listed buildings on campus

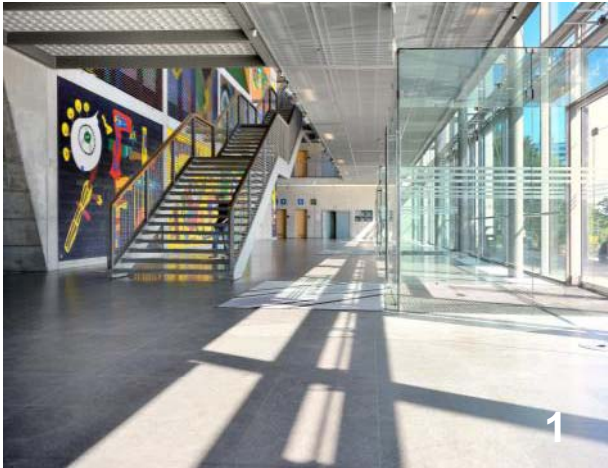


1 Fritz-Foerster Bau
4 Beyer Bau

2 Schuhmann Bau
5 Görges Bau (Altana Gallery)

3 Weberplatz
6 Tharandt

Functional New Buildings

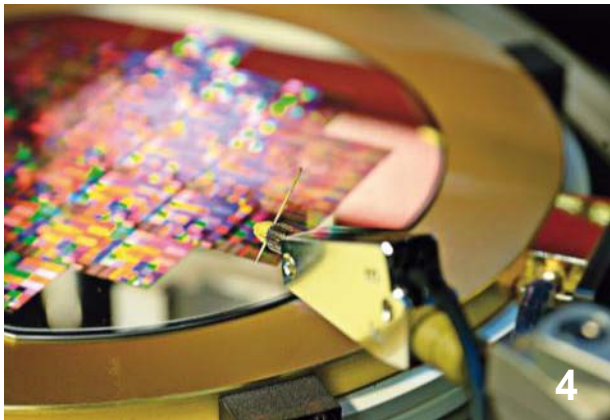
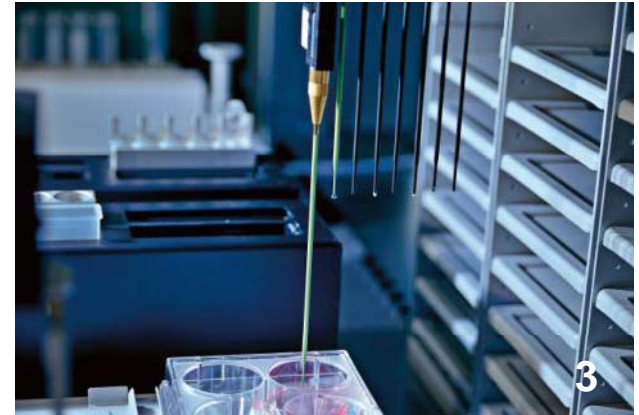


1 Hörsaalzentrum (1998)
4 Biology (2004)

2 Chemistry (2001)
5 Computer Science (2006)

3 Paediatrics Clinic (2003)
6 CRTD (2011)

Excellent Research Conditions



1 SLUB (Library)

4 Wafer in cleanroom (NaMLab)

2 Zebrafish facility (CRTD)

5 MRT

3 CRTD

6 High voltage lab

5 Schools | 14 Faculties

Engineering Sciences

- Computer Science
- Electrical and Computer Engineering
- Mechanical Science and Engineering

Civil and Environmental Engineering

- Architecture
- Civil Engineering
- Environmental Sciences
- Transport and Traffic Sciences

Humanities and Social Sciences

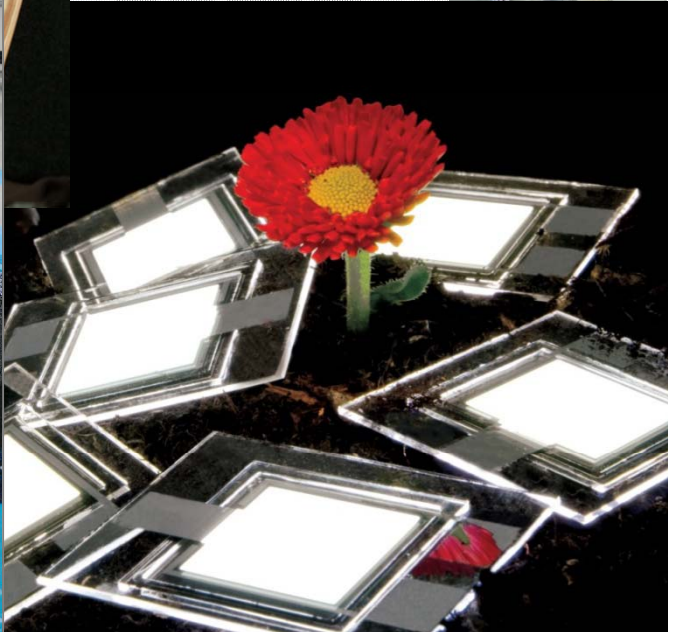
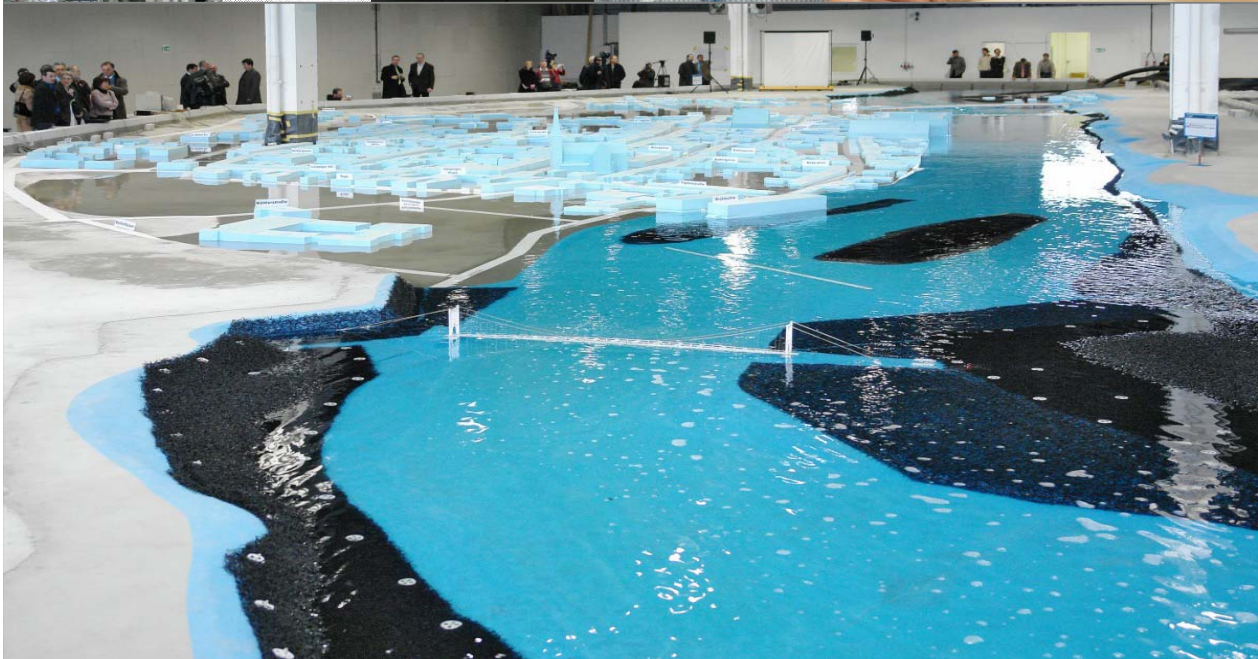
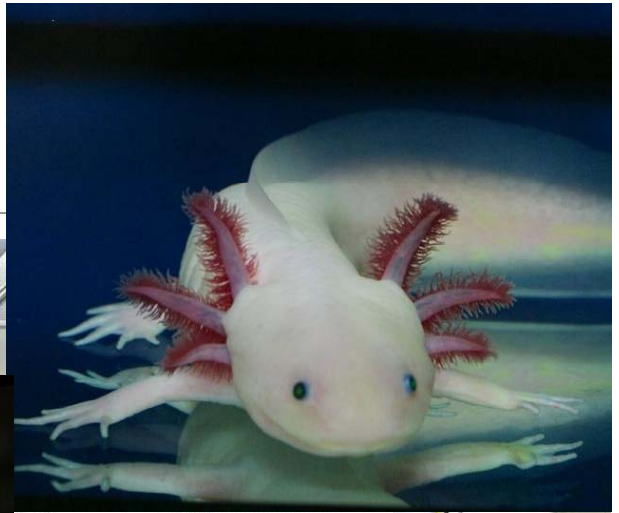
- Business and Economics
- Education
- Law
- Linguistics, Literature and Cultural Studies
- Arts, Humanities and Social Science

Science

- Mathematics
- Physics
- Chemistry
- Psychology
- Biology

Medicine

- Medicine (incl. University Hospital)



How can I study at TUD?

A) For a degree

B) Non-degree (exchange student)

- Knowledge of German (B1) or English (if programme taught in English)
- Learning agreement
- Proof of enrolment at home/
approved by home uni

C) Doctoral Studies



How much does it cost?

- living in student hall (120 – 300 Euro/month) or shared accommodation is possible
- total living costs about 650 Euro/month (~23.800NT\$) (incl. rent, food, books, transport)



How much does it cost?

- no tuition fees but a student service “payment” – at present 257,90 Euro per semester (incl. semester ticket)
~ 9.500NT\$

The semester ticket:

- public transport, Dresden and its surrounding, all regional trains in Saxony



What else is there to do?

- Very vibrant „young“ quarters with lots of discos/clubs/bars
- Many museums, theatres, cinemas
- 91 libraries and archives
- Many festivals(music, art, dance, cinema,...)
- Beautiful surroundings for hiking, climbing, etc.



Can I do sports at TUD?

- „Universitätssportzentrum“ (USZ), offers more than 100 courses (Yoga, Volleyball, Climbing, Canooing, Swimming,...) each semester for a small fee
- more than 300 clubs in Dresden
- 2 big stadiums to watch others doing sports ;) (football, American Football, Volleyball,...)



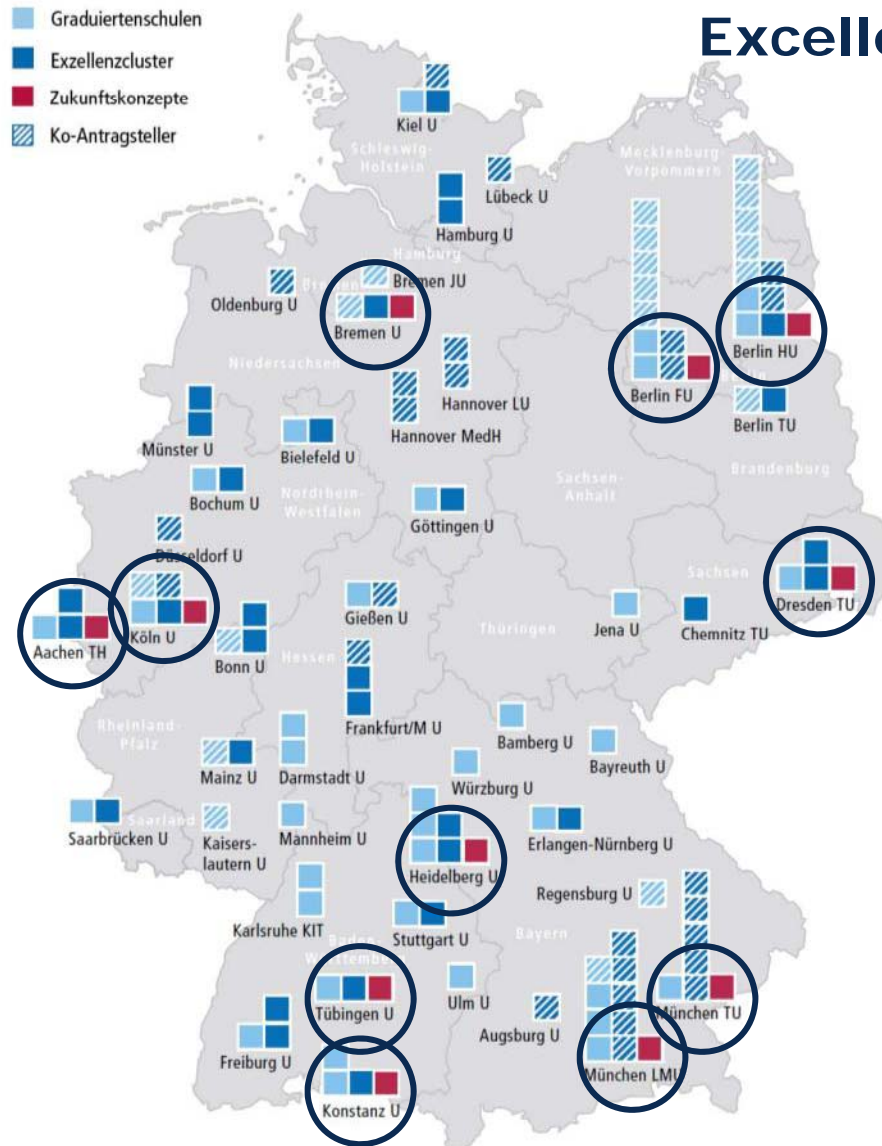


Excellence Initiative: targets and measures

- to make Germany a more attractive research location
- to make German universities more competitive on an international level
- to focus the attention on the outstanding achievements of German universities and the German scientific community



Excellence Initiative | 2nd phase: projects funded



2012 - 2017
(2,4 billion Euros):

45 Graduate Schools

43 Clusters of Excellence

11 Institutional Strategies
 (Universities of
 Excellence)

39 universities funded

Funded proposals of TU Dresden

1st funding line:

GRADUATE
SCHOOL

- Dresden International Graduate School for Biomedicine and Bioengineering (DIGS-BB)



2nd funding line:

CLUSTERS OF
EXCELLENCE

- Center for Regenerative Therapies Dresden (CRTD)
- Center for Advancing Electronics (cfAED)



3rd funding line:

INSTITUTIONAL
STRATEGY

- The Synergetic University

