



E-LEAD

Centre of Excellence

Leadership • Engagement • Development

GLOBE 21

21st Century GLOBAL LEADERSHIP PROGRAM

15 - 28 JULY, 2018

Sydney, Australia





“The Gateway to
Global Leadership,
Business and
Cultural Landscape
and
Life-Long
International
Networks”

CONTENTS

GLOBAL LEADERSHIP PROGRAM 2018

Overview	4
Schedule	5
City of Sydney	6
Lake Keepit, Gunnedah	7
2017 Feedback, Video and Visuals	8 – 11
Corporate Endorsements	12
Fee and Inclusions	13-14
About Us	15-18
Registration and Contact	19

PROGRAM OVERVIEW



Being motivated and proactive in seizing opportunities for personal and professional development is a highly regarded trait in the students who aspire to lead in the 21st Century. One of the crucial aspects of this development is global leadership aspiration. To compete, succeed and stand out in the 21st century as a leader, students and graduates should continually seek ways to enhance their global leadership potential.

The 21st Century Global Leadership Program (Globe 21) is a dynamic and contemporary initiative designed to provide Undergraduate and Postgraduate students from leading International Universities with a gateway to international leadership, business and cultural landscape and to develop life-long global networks.

The program is conceptualised by a globally renowned leadership professional and modelled on frameworks and approaches used at the world's leading Universities and Business Schools. This is a highly immersive program comprises of leadership development workshops and panels, corporate and cultural immersion activities, experiential leadership challenges and reflective learning opportunities.

The 2018 program will be held from 15-28 July in Sydney, Australia.

Leadership Workshops and Panels

Corporate and Business Engagement

Global Cultural Immersion

Experiential Leadership Residential

Life-Long Global Networks



PROGRAM SCHEDULE

15
JUL

SYDNEY, NEW SOUTH WALES

Airport Welcome & Hotel Check In



16-18
JUL

SYDNEY, NEW SOUTH WALES

Leadership Workshops & Panels
Company Visits
Cultural Immersion and Sightseeing



19-21
JUL

SYDNEY, NEW SOUTH WALES

Leadership Workshops & Panels
Company Visits
Cultural Immersion and Sightseeing



22-27
JUL

LAKE KEEPIT, GUNNEDAH

Experiential Leadership Residential
Leadership Skills Training
Reflective Learning Sessions

28
JUL

SYDNEY, NEW SOUTH WALES

Farewell and Airport Transfer



CITY OF SYDNEY

(Host for the 2018 Global Leadership Program)

Sydney is the state capital of New South Wales and the most populous city in Australia and Oceania. Located on Australia's east coast, the metropolis surrounds the world's largest natural harbour, and sprawls towards the Blue Mountains to the west. Residents of Sydney are known as "Sydneysiders". Sydney is the location of the secondary official residences of the Governor-General of Australia and the Prime Minister of Australia, Admiralty House and Kirribilli House respectively.



LAKE KEEPIT, GUNNEDAH

(Gunnedah - Koala Capital of World, Lake Keepit - Habitat of Kangeroos)

Six hours north of Sydney, Lake Keepit is relaxing with wide-open spaces, serene waters and endless skies. The rural retreat is surrounded by timber country and is popular destination for outdoor activities and experiential leadership skills training.



Aerial View of Lake Keepit Leadership Residential Site



Lake Side Memories with Kangeroos



Leadership, Resilience and Strategy Challenges

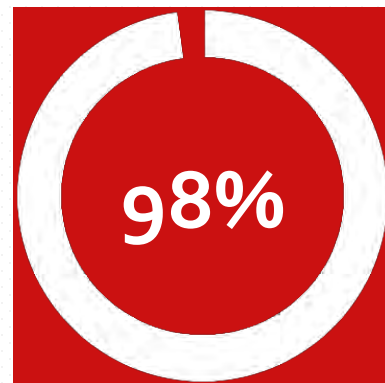
2017 FEEDBACK

“My global Leadership experience has been so memorable. I have become more confident, feel energetic and totally a different person now” - **Lin Yirong, Zhejiang University, CHINA**

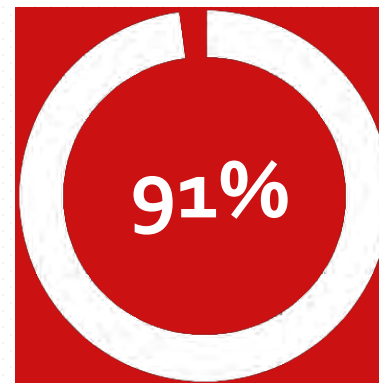
“This has been the best experience of my life. It was so motivating and inspiring and it has broadened my perspective on what and where I want to go in life. - **Farida Syed, Macquarie University, AUSTRALIA**

“One of the most important experiences that I had is to know different people from different nations”

- **Reem Al Mutib, International University of Japan, JAPAN**
- “Its really an honour for me to be the part of this program. I have learnt how to adjust my attitude and how to communicate better in team as well as what kind of person I am and how to make efforts to lead myself and then others” - **Wenjing Cui, Zhejiang University, CHINA**



Of students would **recommend this program** to other students.



Of students rated the program to be **highly useful and beneficial**.

2017 VIDEO

Watch on YOUKU

http://v.youku.com/v_show/id_XMzlyMDY4MjExMg==.html?spm=a2h3j.8428770.3416059.1

Watch on YOUTUBE

<https://youtu.be/aJDDYyFjDyY>



2017 HIGHLIGHTS



GLOBAL LEADERSHIP IMMERSION PROGRAM

2017 HIGHLIGHTS



CORPORATE ENDORSEMENTS



"A powerful program that will enable students to gain important insights and start them on their leadership development journey."

Karen Mcfadzen, Former Vice President, Cisco Systems

"The program teaches students the necessary soft skills to become a leader in the 21st Century. Soft skills are transferable between occupations, which is why, this program is essential in developing future global leaders"

Gloria Chan, IBM

"Through this program I'm confident we're helping inspire new ways of approaching life's challenges that will help keep a cohort of adults ahead of the pack in leadership skills. It's good for them, their families, the community and the country"

Justin Di Lollo, Consultant, Hakluyt

"This program will help to build a strong foundation for students' success in their future academic and career journey"

Maryia Babaryka, Deloitte Australia

"Leadership cannot be learned by sitting in lectures, it's learnt through experience and practice - two crucial elements this program encapsulates and provides to its participants. This course is a must do for all those wanting to learn about themselves, build networks and hone their leadership abilities"

Cara Fioravanti, Citi

"This program aims to develop global leadership potential in students through various challenges to encourage personal growth. Participants are introduced to their strengths which allows effective engagement in team-building activities and reiterating their personal leadership style"

Michelle Yeong, Grant Thornton

"The skills and abilities that students develop in the Global Leadership Program are key in today's workplace. E-LEAD is recognised by proactively developing key skills that will assist students personally and professionally in their future aspirations."

Michelle Jan, Qantas

"The program provides a basis for students to begin developing the key characteristics needed as they grow into future leaders. It gives students both the knowledge and then the environment to develop these characteristics in a practical and dynamic way whilst providing them with feedback the whole way, this program is definitely a key stepping stone to building our leaders of the future"

Nancy Chen, Credit Suisse

"Leadership isn't just a title. It's about understanding who you are, your strengths, weaknesses and what you're passionate about. This will help you achieve all of that and help you become the leader you were born to be"

Ronica Koey, Sydney Water

FEE AND INCLUSIONS

PROGRAM FEE

EARLY-BIRD
(Deadline: 30/3/18)

\$2650 AU

NORMAL FEE

\$2950 AU



INCLUSIONS

- **Company Visits**
Access to Australian company visits and related activities
- **Cultural Immersion**
Access to traditional Australian cultural activities
- **Sightseeing**
Access to organised sightseeing tours to famous Australian icons including Sydney Harbour Cruise
- **Innovation and Entrepreneurship**
Visit to an Australian innovation and/or entrepreneurship centre
- **Psychometric Profiling**
Completion of psychometric profile and access to personalised report
- **Leadership Development Workshops and Panel Sessions**
Workshops and career and leadership development panels with Australian professionals
- **Industry Engagement**
Access to all industry engagement activities and networking events
- **Social Events**
Access to all social development opportunities and parties
- **Experiential Leadership Residential**
Access to leadership residential held in the heart of Australian country (Lake Keepit, Gunnedah). Participation in team-based leadership challenges and feedback sessions.
- **Life-Long Friendships and Global Networks**
Exclusive access to global buddies during the program to build life-long international friendships
- **Global Buddies**
Engagement with International Buddies throughout the program

CONTINUED OVERLEAF ➔

FEE AND INCLUSIONS



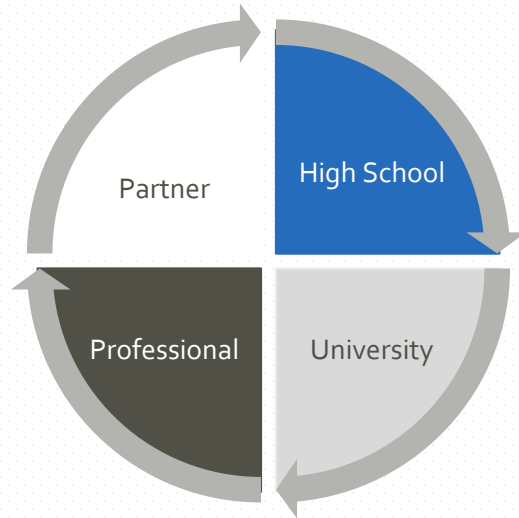
INCLUSIONS (CONT.)

- **Accommodation in Sydney**
Minimum 3 Star (2-3 people/room)
- **Accommodation at Lake KeepIt Experiential Leadership Residential**
Lodge-style accommodation
- **Meals**
Breakfasts, lunches and dinners, except free activity and travel time
- **Transportation**
Shuttle bus for sightseeing tours and company visits during the program
- **Certificate of Participation**
Official Certificate of Participation
- **Souvenir**
An Australian Souvenir for each participant
- **Program Shirt**
A program branded t-shirt for each participant
- **Long-term networking, engagement and development**
Access to all electronic engagement platforms (Social Media Channels) to facilitate life-long networks and engagement/development
- **Visuals and Footage**
Exclusive access to visuals/videos and footage of the program to share with friends and family
- **Airport Transfers**
Transfers between Sydney Airport and Hotel (1 transfer/school each way)

EXCLUSIONS

International and Inter-state participants are required to organise their own air tickets, visas and travel insurance.

E-LEAD GLOBAL



Our Mission

E-LEAD is an Australian organisation that is devoted to developing and enhancing the capabilities, aspirations and impact of future and emerging leaders for active global leadership. E-LEAD develops excellence in people through employing a holistic life-cycle approach by blending together experiential leadership learning and development with electronic engagement.

Our Differentiation

Existing leadership program suppliers focus on the quality of programs and learning of skills. These are stand-alone programs targeted at a specific market segment. The E-LEAD's advantage is life-cycle approach whereby programs are developed and offered at all stages of an individual's life cycle starting from secondary school and all the way to professional world. The E-LEAD programs use experiential leadership development methodologies involving real-time leadership coaching and facilitation and blend them with electronic engagement to achieve lasting impact.

OUR PEOPLE

CEO AND PROGRAM DIRECTOR



Shahid Majeed is a globally renowned leadership professional with proven track-record in developing unique experiential leadership programs and incubators including the world's inaugural International Leadership Development Program. Shahid has extensive experience of working with professionals from over 100 corporate organisations and visiting and engaging with the leading universities and business schools across the globe including MIT, Harvard, Yale, London Business School, Copenhagen Business School, Oxford, INSEAD, Kellogg, Rotterdam, Columbia and Wharton.

ADVISORY COUNCIL AND BOARDS

- **E-LEAD Advisory Council** is chaired by the CEO of Toyota Financial Services and consists of senior professionals and leaders from a diverse range of backgrounds.
- **E-LEAD Professional Board** comprises of experts and professionals from a wide range of public and private sector organisations
- **E-LEAD Millenialls Student Board** includes highly motivated student leaders from secondary and tertiary education sectors

OUR PEOPLE

ADVISORY COUNCIL

The E-LEAD Advisory Council provides non-binding high-level strategic advice to shape the future direction of E-LEAD. The Advisory Council consists of senior professionals and leaders from a diverse range of backgrounds.

CHAIR



John Chandler
CEO and President
Toyota Financial Services

MEMBERS



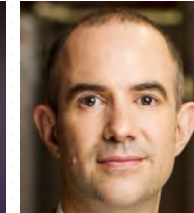
Allan Watkinson
Principal Consultant
Gallup



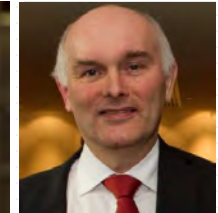
Bruce Lobelson
Project Manager
Rabobank



Jason McClintock
Head of Client
Management
American Express



Justin Di Lollo
Consultant
Hakluyt



Ken Miller
Head of Growth
Advisory
Grant Thornton



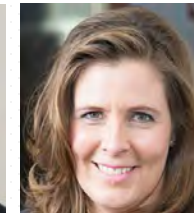
Kerrie-Anne Turner
Head of General
Business
VMware



Louise Lloyd
Managing Director
LouM Consulting



Mark Nicholls
Senior Staff Specialist
St Vincent's Hospital



Michele Owen
Senior Change Leader
Westpac



Dr Roger March
Former Dean
Central Queensland
University



Tony Harb
Director
InConsult



Veena Sahajwala
Associate Dean
UNSW

OUR PEOPLE



PROFESSIONAL BOARD

The E-LEAD Professional Board provides strategic and operational advice and support regarding the functioning of E-LEAD. The board membership includes:

Katherine Clark, **IBM**
Michelle Jan, **Qantas**
Sabrina Hossain, **Telstra**
David Somerville, **Uber**
Anna Samaras, **PwC**
Cara Fioravanti, **Citi**
Chung Uk Lee, **Toyota Finance**
Michael Nemstev, **Microsoft**
Allira Hudson-Gofers, **Shelston IP**
Amy Zhou, **Crowe Horwath**
Andre Debakhapouve, **EY**
Ayesha Shahed, **Nestle**
Eva Li, **Woolworths**
Moritz Draheim, **Goldman Sachs**
Claudia De Andrade, **Ernst and Young**

Julian Parise, **The Treasury**
Katherine Zoe Adams-Lau, **John Holland**
Ronica Koey, **Sydney Water**
Tahir Majeed, **KPMG**
Jabran Saeed, **Westpac**
Vinod Kumar, **Commonwealth Bank**
Thuy Tran, **Deloitte Australia**
Maya Milosevic, **Unilever**
Sally McGhee, **Grant Thornton**
Nancy Chen, **Credit Suisse**
Adam Christopher Dunne, **NEC**
Ursula Dyer Lepporoli, **KPMG**
Ada Gao, **Westpac**
Michael Trail, **Accenture**
Amanda Gravitis, **NSW Trainlink**





REGISTRATION

The 2018 program fee is \$2950 AU per student . The early-bird fee is \$2650 AU if registration is confirmed by 30 March , 2018.

For registration, please contact us at the details below:

CONTACT

SHAHID MAJEED

Executive Director, 21ST Century Global Leadership Program (Globe 21)
E-LEAD Centre of Excellence for Leadership, Engagement and Development

T: 02 8540 6392

M: 0415 581 591

E: s.majeed@e-lead.com.au

JOYCE CHEN

Executive Officer, E-LEAD Centre of Excellence for Leadership, Engagement and Development

E: info@e-lead.com.au

W: www.e-lead.com.au